



Jackson & Co

California Close

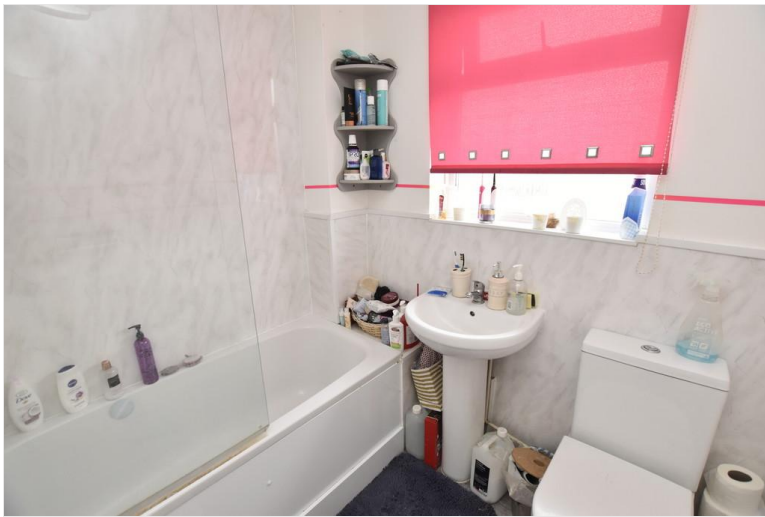
Colchester, CO4 9SG

- ONE BEDROOM
- PERFECT STARTER HOME OR INVESTMENT
- CURRENTLY LET FOR £650 PCM
- OFF-ROAD PARKING & PRIVATE GARDEN

£170,000

EPC Rating 'TBC'





Property Description

LIVING ROOM

12' 0" x 11' 11" (3.66m x 3.63m) A front entrance uPVC door leads into the living room with a front facing double glazed window and down light to the ceiling. TV point, panel heater and an archway into the kitchen. Stairs to the first floor.

KITCHEN

12' 2" x 5' 7" (3.71m x 1.7m) Fitted with a range of units comprising floor standing cupboards and drawers with work tops over, inset single bowl stainless steel sink and drainer unit with mixer tap over, plumbing for automatic washing machine and fridge/freezer, built-in electric oven with four ring electric hob and extractor hood over, uPVC double glazed window to side.

FIRST FLOOR LANDING

With built-in storage cupboard with mirrored doors incorporating airing cupboard, doors to:-

BEDROOM

12' 0" x 11' 3" (3.66m x 3.43m) Upvc double glazed window to side elevation, electric wall mounted heater.

BATHROOM

6' 3" x 5' 8" (1.91m x 1.73m) Fitted with a modern suite comprising panelled bath with bath mixer taps and shower attachment over (power shower), low level WC and pedestal wash hand basin, tiling to splash backs, wall mounted electric heater and uPVC double glazed opaque window.

OUTSIDE

To the front of the property there is a driveway for off road parking and access to the private walled garden with shed included.

60 Caelum Drive
Colchester
Essex
CO2 8FP

www.jackson-ps.co.uk
sales@jackson-ps.co.uk
01206 863900

Agents Note: Whilst every care has been taken to prepare these particulars, they are for guidance purposes only. All measurements are approximate and are for general guidance purposes only and whilst every care has been taken to ensure their accuracy, they should not be relied upon and potential buyers/tenants are advised to recheck the measurements.