



Jackson & Co



Quayside Drive

Colchester, CO2 8GT

Guide Price £170,000 - £180,000

*** GUIDE PRICE OF £170,000 - £180,000 ***

** INVESTMENT ONLY **

Located within easy access to the Essex University is this two bedroom apartment which is let for £1000pcm. The property is in good condition with a balcony and is also within easy reach to shops and amenities.



Property Features

- TWO BEDROOM
- ONE BATHROOM
- INVESTMENT
- IDEAL FOR THE UNIVERSITY
- £1000PCM
- GOOD CONDITION
- CLOSE TO SHOPS
- BALCONY
- SHORT DRIVE TO TOWN

Full Description

OVERVIEW

*** GUIDE PRICE OF £180,000 - £190,000 ***

** INVESTMENT ONLY **

Located within easy access to the Essex University is this two bedroom apartment which is let for £1000pcm. The property is in good condition with a balcony and is also within easy reach to shops and amenities.

ENTRANCE HALL

Doors to;

KITCHEN

7' 10" x 7' 0" (2.4m x 2.15m) Matching base and eye level units, one and half stainless steel sink bowl with drainer, integrated appliances, extractor, double glazed window and space for a washing machine.

LOUNGE/DINER

16' 4" x 13' 1" (5m x 4m) Double glazed window windows, door to balcony and heater.

BATHROOM

7' 2" x 6' 6" (2.2m x 2m) Low level WC, wash hand basin, panelled bath with shower over and heated towel rail.

MASTER BEDROOM

9' 10" x 9' 6" (3m x 2.9m) Double glazed window and heater.

AGENTS NOTES

EPC - C

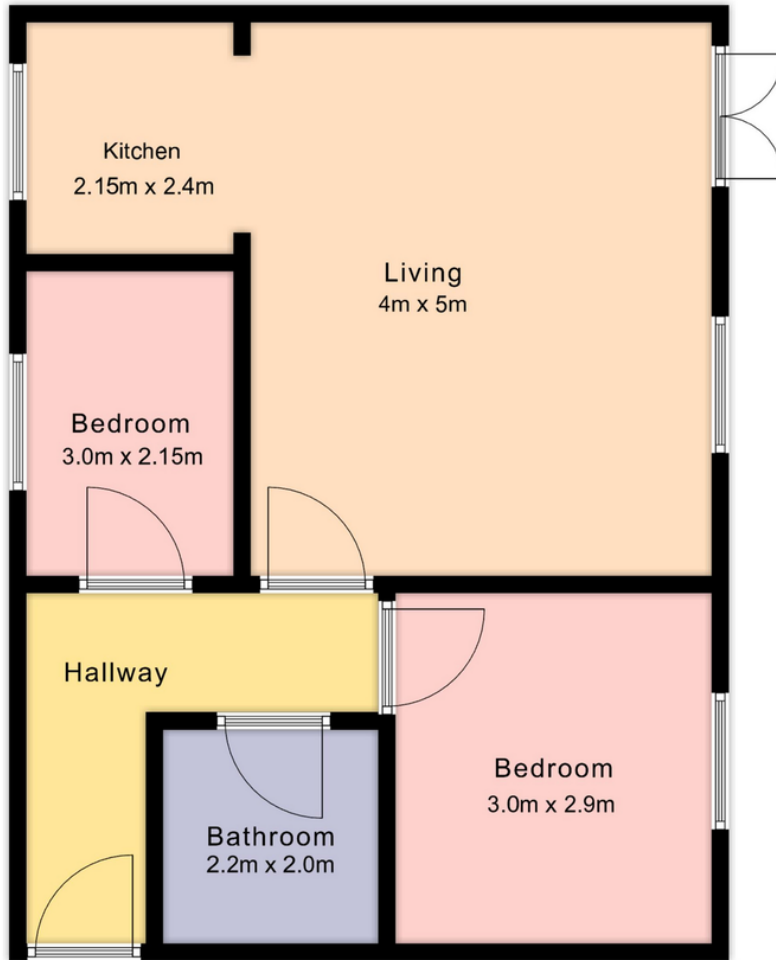
Council Tax - B

Service Charge (EPA) £1,602

Ground Rent (EPA) £197

Leasehold (138 Years)





Score	Energy rating	Current	Potential
92+	A		
81-91	B		84 B
69-80	C	72 C	
55-68	D		
39-54	E		
21-38	F		
1-20	G		

60 Caelum Drive
 Colchester
 Essex
 CO2 8FP

www.jackson-ps.co.uk
sales@jackson-ps.co.uk
 01206 863900

Agents Note: Whilst every care has been taken to prepare these particulars, they are for guidance purposes only. All measurements are approximate and for general guidance purposes only and whilst every care has been taken to ensure their accuracy, they should not be relied upon and potential buyers/tenants are advised to recheck the measurements