



Jackson & Co



Geranium Walk

Colchester, CO4 3QT

Guide Price £270,000 - £300,000

Located to the north of Colchester is this three bedroom family home, inside you will find a spacious lounge, conservatory with log burner, a modern kitchen, utility room, first floor bathroom and a low maintenance garden.



Jackson & Co

Property Features

- THREE BEDROOM
- NORTH COLCHESTER
- INVESTORS
- CONSERVATORY
- LOG BURNER
- UTILITY ROOM
- FIRST FLOOR BATHROOM
- LOW MAINTENANCE GARDEN
- CO4
- CLOSE TO SHOPS

Full Description

ENTRANCE HALL

Stairs to first floor, radiator and doors to;

KITCHEN/BREAKFAST ROOM

20' 9" x 11' 1" (6.32m x 3.38m) Matching base and eye level units, one and a half stainless steel sink bowl with drainer, integrated double oven, gas hob, extractor above, space for a washing machine, fridge/freezer, obscured double glazed window to front, radiator and leading to;

INNER HALL

Doors to;

WC

Low level WC, wash hand basin and storage.

UTILITY ROOM

Wall mounted boiler, obscured double glazed window, space for appliances.

FIRST FLOOR

Radiator, double glazed window to rear and doors to;

MASTER BEDROOM

13' 9" x 10' 4" (4.19m x 3.15m) Double glazed windows to front, radiator and built in wardrobes.

BEDROOM TWO

13' 9" x 8' 7" (4.19m x 2.62m) Obscured double glazed window to front, storage and radiator.

BEDROOM THREE

8' 11" x 8' 2" (2.72m x 2.49m) Double glazed window to rear and storage.

BATHROOM

Low level WC, pedestal wash hand basin, panelled bath with shower over, radiator and a obscured double glazed window to rear.

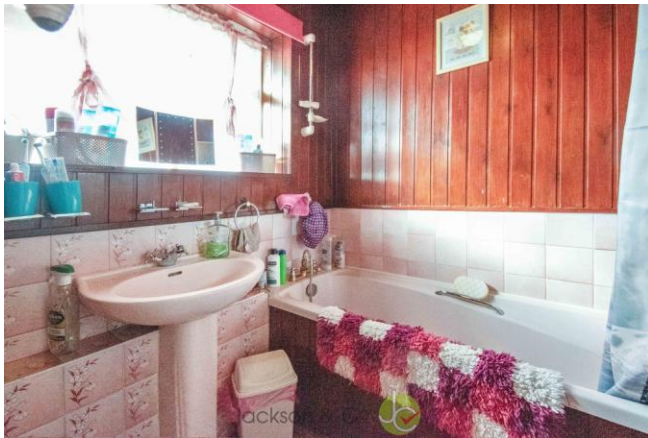
CONSERVATORY

13' 1" x 13' 1" (3.99m x 3.99m) Radiator, log burner and double glazed door to garden.

GARDEN

The property features a low maintenance garden with decking area with small Astro turfed area.







Ground Floor



First Floor

60 Caelum Drive
Colchester
Essex
CO2 8FP

www.jackson-ps.co.uk
sales@jackson-ps.co.uk
01206 863900

Agents Note: Whilst every care has been taken to prepare these particulars, they are for guidance purposes only. All measurements are approximate and are for general guidance purposes only and whilst every care has been taken to ensure their accuracy, they should not be relied upon and potential buyers/tenants are advised to recheck the measurements.