



Jackson & Co

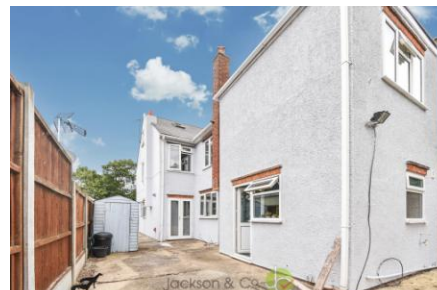
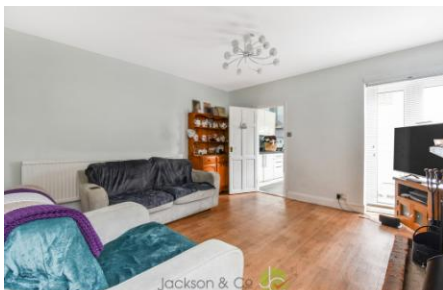


## Halstead Road

Stanway, Colchester, CO3 0JT

Guide Price £375,000 - £400,000

Jackson & Co are delighted to present to the market this FOUR/FIVE bedroom semi-detached home situated in the popular Stanway district of Colchester which is conveniently located for the A12, A120, retail parks and a number of highly rated Primary & Secondary schools.



# Property Features

- SEMI-DETACHED HOUSE
- LOUNGE
- FOUR/FIVE BEDROOMS
- FAMILY BATHROOM & ENSUITE TO MASTER
- KITCHEN
- OPEN FIREPLACE
- UTILITY
- LARGE REAR GARDEN WITH OUTBUILDINGS
- DINING ROOM

## Full Description

### OVERVIEW

GUIDE PRICE of £375,000 - £400,000

This property is deceptively spacious inside, offering two reception rooms, an en-suite to master, family bathroom and a utility room. The rear garden extends to over 100ft with the benefit of two outbuildings.

#### ENTRANCE HALL

#### LOUNGE

12' 9" x 10' 0" (3.89m x 3.05m)

#### DINING ROOM

17' 10" x 13' 8" (5.44m x 4.17m)

#### KITCHEN

10' 7" x 7' 10" (3.23m x 2.39m)

#### UTILITY ROOM

10' 5" x 9' 8" (3.18m x 2.95m)

#### FAMILY BATHROOM

9' 0" x 5' 3" (2.74m x 1.6m)

#### FIRST FLOOR LANDING

#### MASTER BEDROOM

13' 7" x 11' 6" (4.14m x 3.51m)

#### EN-SUITE

4' 10" x 4' 6" (1.47m x 1.37m)

#### BEDROOM THREE

12' 5" x 10' 9" (3.78m x 3.28m)

#### BEDROOM FOUR

12' 4" x 9' 9" (3.76m x 2.97m)

#### DRESSING ROOM

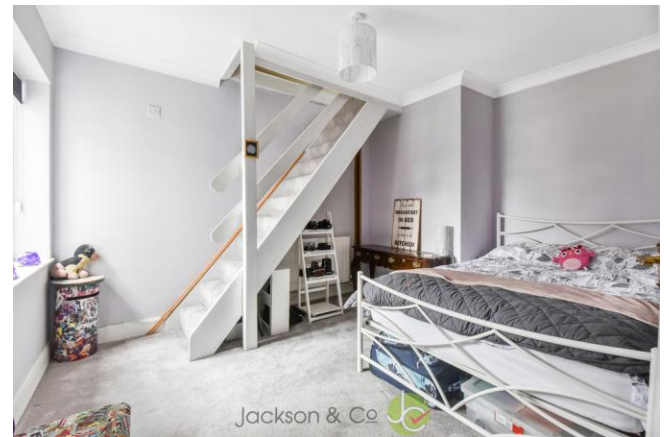
10' 7" x 8' 0" (3.23m x 2.44m)

#### SECOND FLOOR LANDING

#### BEDROOM TWO

14' 10" x 13' 10" (4.52m x 4.22m)







Score	Energy rating	Current	Potential
92+	A		
81-91	B		
69-80	C		77 C
55-68	D	61 D	
39-54	E		
21-38	F		
1-20	G		

60 Caelum Drive  
Colchester  
Essex  
CO2 8FP

www.jackson-ps.co.uk  
sales@jackson-ps.co.uk  
01206 863900

Agents Note: Whilst every care has been taken to prepare these particulars, they are for guidance purposes only. All measurements are approximate and for general guidance purposes only and whilst every care has been taken to ensure their accuracy, they should not be relied upon and potential buyers/tenants are advised to recheck the measurements