



JOHN ALEXANDER  
ESTATE AGENTS



JOHN ALEXANDER  
ESTATE AGENTS



JOHN ALEXANDER



JOHN ALEXANDER

## 2 Bedroom Semi-Detached House located in Silver End.

Find us on..



JOHN ALEXANDER  
ESTATE AGENTS

# Western Lane Silver End Witham CM8 3SE



2



2



0



TBC



Guide Price  
**£325,000 -  
£350,000**

## FULL DESCRIPTION

### OVERVIEW

**\*GUIDE PRICE £325,000 TO £350,000\***

John Alexander is excited to present this **NEWLY BUILT** two-bedroom semi-detached house, situated in the highly sought-after village of Silver End. The property boasts a high level of quality, complete with flooring throughout. It also features a turfed garden, patio area with a garden shed, integrated dishwasher, fridge/freezer, and an electric vehicle (EV) car charger. Internally, the house offers a generously sized open-plan kitchen, dining, and lounge area that connects seamlessly to a sunny garden through bi-fold doors. Other features include a convenient cloakroom, two spacious double bedrooms, with the master bedroom enjoying an ensuite bathroom, and a family bathroom. The property provides parking space for two cars right in front.

### HALLWAY

### CLOAKROOM

### KITCHEN/DINER/LOUNGE

**29' 9" x 14' 2" (9.07m x 4.32m)**

### LANDING

### BEDROOM ONE

**14' 2" x 8' 6" (4.32m x 2.59m)**

### ENSUITE

### SECOND BEDROOM

**14' 2" x 8' 1" (4.32m x 2.46m)**

### FAMILY BATHROOM

### REAR GARDEN

Patio area, garden laid to lawn, garden shed and side access.

### FRONT ASPECT

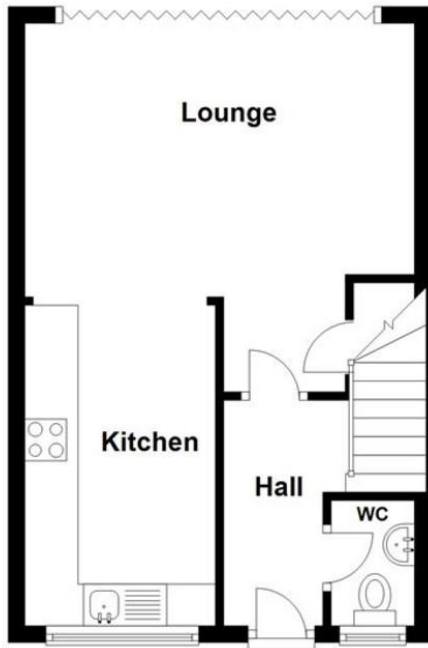
Parking for 2 cars, Ev car Charger.



## FLOORPLAN

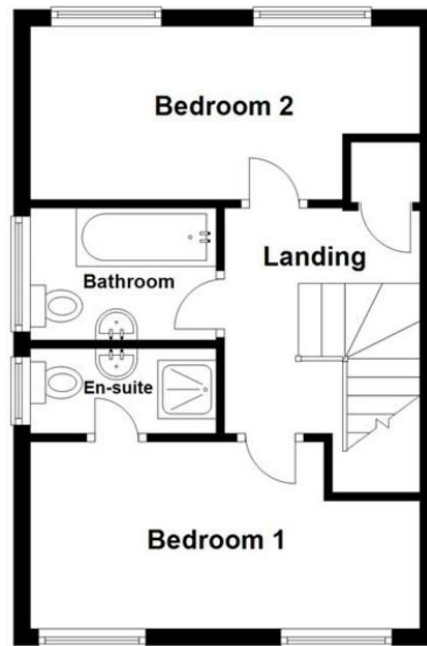
### Ground Floor

Approx. 33.8 sq. metres (363.6 sq. feet)



### First Floor

Approx. 33.8 sq. metres (363.6 sq. feet)



Total area: approx. 67.6 sq. metres (727.2 sq. feet)

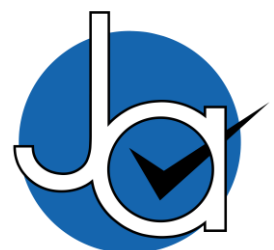
The floor plan is for guidance purposes only and has been produced merely to illustrate the relative position of rooms within a building. It is not to scale.  
Plan produced using PlanUp.

CONTACT  
1 Church Road  
Colchester  
Tiptree  
Essex  
CO5 0LG

E [info@john-alexander.co.uk](mailto:info@john-alexander.co.uk)

T 01621 814334 [www.john-alexander.co.uk](http://www.john-alexander.co.uk)

Find us on..



**JOHN ALEXANDER**  
ESTATE AGENTS