



2 Bedroom Detached Bungalow located in Tiptree.

Find us on..



JOHN ALEXANDER
ESTATE AGENTS

Church Road Tiptree Colchester CO5 0LG



2



1



1



D



TBC



FULL DESCRIPTION

OVERVIEW

This two-bedroom bungalow is ideally situated, just a stone's throw away from the heart of Tiptree village. Enjoy the convenience of having amenities and shops within easy reach, making every day errands a breeze. For those who rely on public transport, a conveniently located bus stop is just a short walk away, enhancing your connectivity.

This property comes with the added benefit of having no onward chain.

The interior has been thoughtfully updated, boasting a modernized kitchen and shower room that cater to contemporary tastes and lifestyles. The bungalow comprises two spacious double bedrooms, each equipped with fitted wardrobes, as well as a comfortable living room for relaxation.

Step outside and discover a generously sized rear garden that provides a canvas for your outdoor aspirations – whether it's creating a tranquil haven for relaxation or a vibrant space for entertaining friends and family.

The front garden features mature shrubs and bushes that create a sense of privacy and seclusion. The driveway provides a secure off-road parking space and leads to the garage, which is equipped with power and lighting for added convenience.

ENTRANCE HALL

13' 1" x 4' 8" (3.99m x 1.42m)

LIVING ROOM

13' 6" x 11' 3" (4.11m x 3.43m)

BEDROOM ONE

11' 9" x 11' (3.58m x 3.35m)

BEDROOM TWO

10' 9" x 10' 3" (3.28m x 3.12m)

KITCHEN/BREAKFAST ROOM

13' 7" x 9' 6" (4.14m x 2.9m)

SHOWER ROOM

7' 5" x 5' 4" (2.26m x 1.63m)

Guide Price
**£375,000 to
£400,000**



Church Road

Approximate Gross Internal Area = 62.7 sq m / 675 sq ft

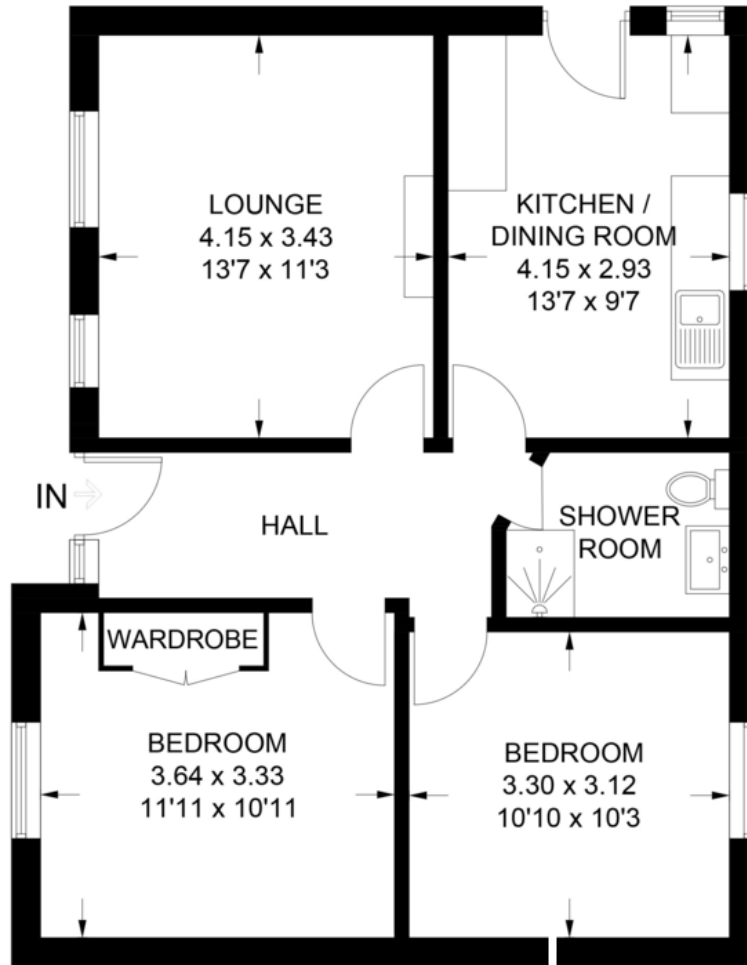
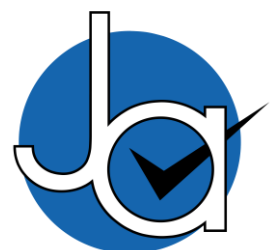


Illustration for identification purposes only, measurements are approximate, not to scale.

CONTACT
1 Church Road
Tiptree
Essex
CO5 0LG

E info@john-alexander.co.uk
T 01621 814334 www.john-alexander.co.uk

Find us on..



JOHN ALEXANDER
ESTATE AGENTS