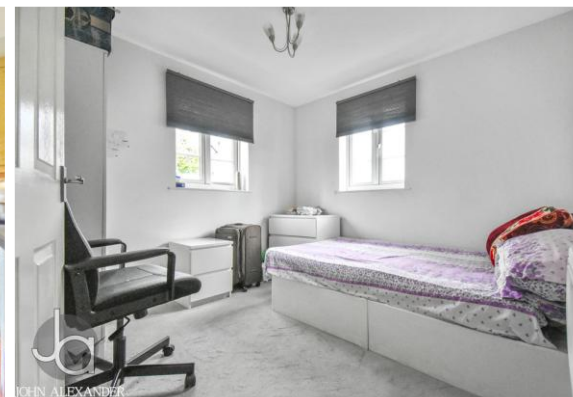




2 bedroom Apartment located in Colchester.

Guide Price
£165,000

Find us on..



JOHN ALEXANDER
ESTATE AGENTS

22 Hardie's Point Colchester CO2 8JT



2



1



0



B



EPC

D



FULL DESCRIPTION

OVERVIEW

*** GUIDE PRICE OF £180,000 - £190,000 ***

Jackson and Co welcome this two bedroom first floor apartment located within close proximity to Hythe station and Essex university.

The property is currently let for £1050pcm until October 2023.

ENTRANCE HALL

With door from communal entrance hall, built in cupboard, doors to:

LOUNGE/DINER

8' 10" x 16' 11" (2.69m x 5.16m)

French doors to balcony, door to:

KITCHEN FITTED

7' 01" x 11' 09" (2.16m x 3.58m)

Fitted with a range of units and work surfaces with cupboards under. Space for a tall standing fridge freezer and washing machine built in four ring ceramic hob and electric oven, wall mounted cabinets.

BATHROOM

comprising of panelled bath overhead shower with glass screen, hand basin, low level WC

PRINCIPLE BEDROOM

9' 10" x 9' 10" (3m x 3m)

Double glazed window to rear with door to adjoining en-suite shower room.

ENSUITE

Shower cubicle, hand basin and low level WC.

BEDROOM TWO

9' 9" x 9' 9" (2.97m x 2.97m)

Dual aspect double glazed windows to side and rear.

AGENTS NOTE

EPC rating - D

Council Tax band - B

Service Charge - £2,039.12 PA

Ground Rent - £175 PA

Years remaining on this lease: 105 years

This property is currently let and managed by Jackson and Co and will continue to be with the new owner.



FLOORPLAN

DIRECTIONS

CONTACT

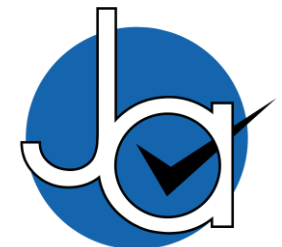
**London Road
Stanway
Colchester
Essex
CO3 0NY**

E info@john-alexander.co.uk

T 01206 656007

www.john-alexander.co.uk

Find us on..



JOHN ALEXANDER
ESTATE AGENTS