




Jackson & Co



Jackson & Co 

Victory Road

Clacton-on-Sea, CO15 3DX


Guide Price £110,000 - £135,000

*** GUIDE PRICE OF £110,000 - £135,000 ***

** INVESTMENT ONLY **

Discover the perfect blend of comfort and convenience with this stunning one-bedroom apartment on Victory Road in Clacton-On-Sea. This modern, stylish apartment is ideal for those who appreciate a beautiful and contemporary living environment. The property is currently let for £615pcm till November 2023.




Jackson & Co 




Jackson & Co 



Jackson & Co 



Jackson & Co 

Property Features

- GROUND FLOOR SELF-CONTAINED MAISONETTE
- ONE ALLOCATED PARKING
- BEDROOM ONE 16'8 x 13'4
- BRAND NEW DEVELOPMENT
- NO ON-GOING CHAIN
- CLOSE PROXIMITY TO TOWN CENTRE/STATION
-

Full Description

THE LOCATION

*** GUIDE PRICE £125,000 - £150,000 ***

Clacton-On-Sea is a charming seaside town located on the northeast coast of Essex, England. With its long sandy beaches, seafront esplanade, and colorful beach huts, Clacton-On-Sea is a popular destination for families and tourists, particularly during the summer months.

Aside from its beautiful coastline, Clacton-On-Sea offers a wide range of entertainment and attractions for visitors, including a range of amusement arcades, local art galleries and museums, and theatres.

For those who enjoy outdoor activities, Clacton-On-Sea is an idyllic destination, with access to several local parks and nature reserves, including the nearby Clacton-On-Sea

Country Park, which offers a beautiful landscape of woodland, meadowland, and walking trails.

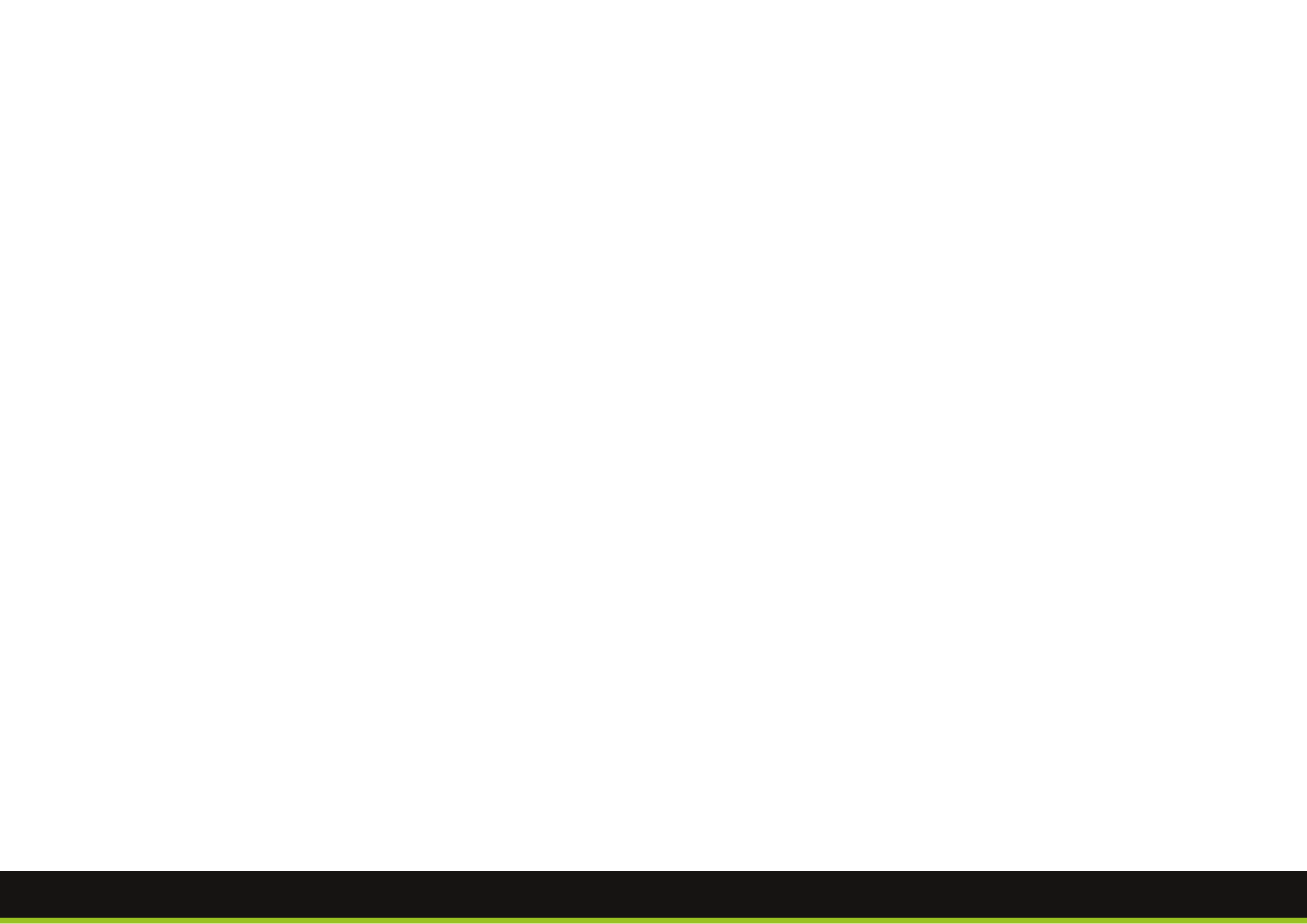
The town is also a great hub for shopping, with a range of local shops, supermarkets, and indoor shopping centers, including Clacton Retail Park, providing visitors with plenty of choices for their shopping needs.

Overall, Clacton-On-Sea offers a delightful mix of natural beauty, family-friendly attractions, and plenty of entertainment options, making it one of the most popular destinations in the region.



AGENTS NOTES

This property is currently let and managed by Jackson and Co and will continue to be with the new owner.



Victory Road

Approximate Gross Internal Area = 50.9 sq m / 548 sq ft

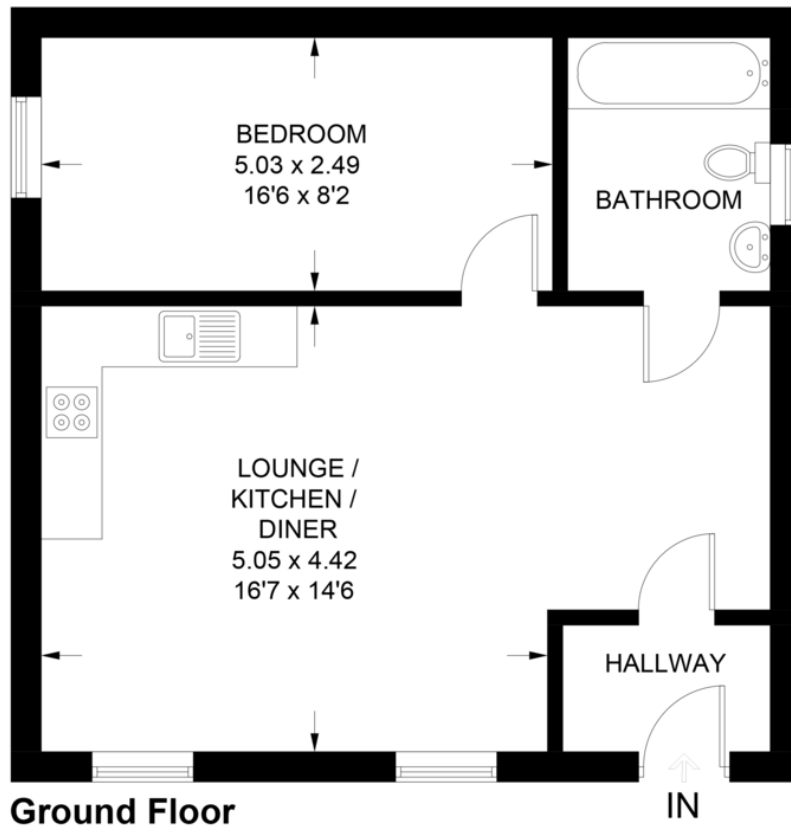


Illustration for identification purposes only,
measurements are approximate, not to scale.

60 Caelum Drive
Colchester
Essex
CO2 8FP

www.jackson-ps.co.uk
sales@jackson-ps.co.uk
01206 863900

Agents Note: Whilst every care has been taken to prepare these particulars, they are for guidance purposes only. All measurements are approximate and for general guidance purposes only and whilst every care has been taken to ensure their accuracy, they should not be relied upon and potential buyers/tenants are advised to recheck the measurements