



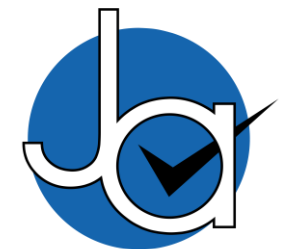
1 bedroom Apartment located in Colchester.

Guide Price
£125,000

Find us on..



JOHN ALEXANDER



JOHN ALEXANDER
ESTATE AGENTS

18 Crown House Southway Colchester CO2 7FA

FULL DESCRIPTION

OVERVIEW

***GUIDE PRICE of £125,000 - £150,000

INVESTMENT ONLY

A modern one bedroom apartment located in Colchester City Centre on the second floor with an allocated parking space. The property benefits from open plan living and a bathroom. Currently let at £695pcm until February 2024 with the rental potential of £750pcm.

OPEN PLAN LIVING SPACE

13' 6" x 12' 11" (4.11m x 3.94m)

BEDROOM

12' 11" x 9' 3" (3.94m x 2.82m)

BATHROOM

7' 9" x 6' 5" (2.36m x 1.96m)

OUTSIDE

Allocated parking space

AGENTS NOTES

EPC - TBC

Council Tax Band - B

Service Charge (£PA) £1,139.72

Ground Rent (£PA) £300

Lease Remaining 117 years



1



1



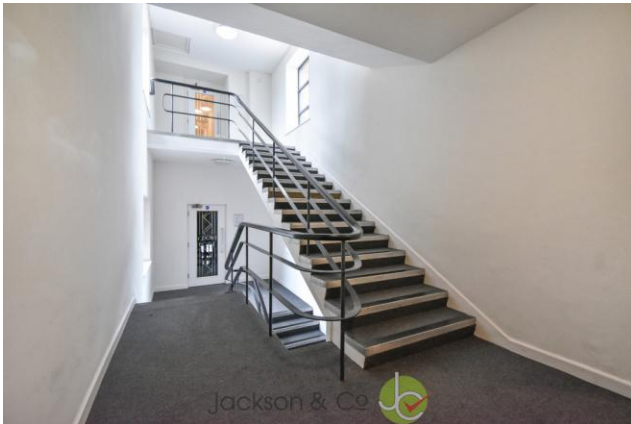
0



EPC

TBC





FLOORPLAN

DIRECTIONS

CONTACT

**London Road
Stanway
Colchester
Essex
CO3 0NY**

E info@john-alexander.co.uk

T 01206 656007

www.john-alexander.co.uk

Find us on..



JOHN ALEXANDER
ESTATE AGENTS