



Jackson & Co



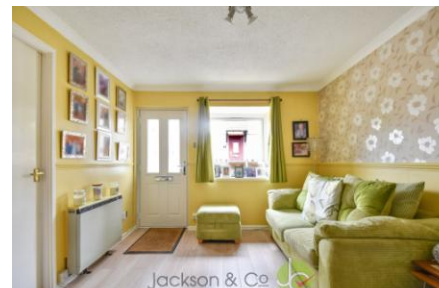
## Purbeck Court, Tabor Road


Colchester, CO1 2XD


Guide Price £170,000 - £190,000


\*\*\* GUIDE PRICE OF £170,000 - £190,000 \*\*\*


A elegant one bedroom freehold residence located within easy access to the Hythe train station, Colchester city centre, and the Essex university. Not only do you have allocated parking and a private rear area of the rear garden but you are also on the doorstep to local shops and amenities.



Jackson & Co 

Jackson & Co 

Jackson & Co 

Jackson & Co 

Jackson & Co 

# Property Features

---

- FREEHOLD
- IDEAL FIRST TIME HOME
- INVESTORS
- CLOSE TO UNIVERSITY
- ONE BEDROOM
- PARKING
- FIRST FLOOR BATHROOM
- CLOSE TO COLCHESTER CITY CENTRE
- CLOSE TO HYTHE STATION

# Full Description

---

## THE HOME

\*\*\* GUIDE PRICE OF £170,000 - £190,000 \*\*\*

Discover a lovely one-bedroom cluster house located in a prime spot in Colchester at Purbeck Court. It is an ideal property for first-time buyers, young professionals or singles looking for a cozy and low maintenance freehold home.

The property offers a living room and kitchen area, The fitted kitchen features an electric oven, hob, fridge and ample storage space for all your cooking equipment.

The comfortable and well-proportioned double bedroom is located on the first floor, complete with a built-in wardrobe for storage. The modern bathroom features a three-piece bathroom suite, providing you with all the necessary amenities.

This cluster house comes with a private garden, which is a perfectly landscaped outdoor space with room for a storage shed that provides ample space to store all your garden essentials. The garden would be an ideal place for relaxing and enjoying the



## THE LOCATION

The cluster house is on Tabor Road, which is conveniently located within easy access to a range of local amenities. There are several shops, restaurants and pubs within walking distance of the property. For more extensive shopping, the vibrant town center of Colchester is just a few minutes away by car.

The property is a short distance from several popular green spaces including Castle Park, one of Colchester's most picturesque open spaces, and the nearby Colne Valley and Wivenhoe Trail which is perfect for those who enjoy outdoor pursuits such as cycling or walking.

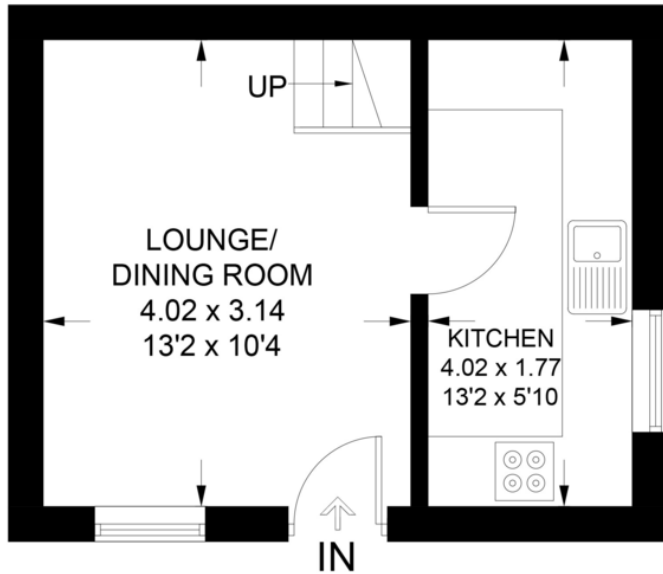
This location is also ideal for those who regularly commute to London. Colchester has excellent transport links including easy access to the A12 which is just a few minutes away by car. The town centre has two major train stations, Colchester North and South, which provide regular services to Liverpool Street Station and other major London connections.

The area is also well-equipped with a range of educational facilities, including primary and secondary schools, nurseries, and colleges, making it an ideal place for families with young children.

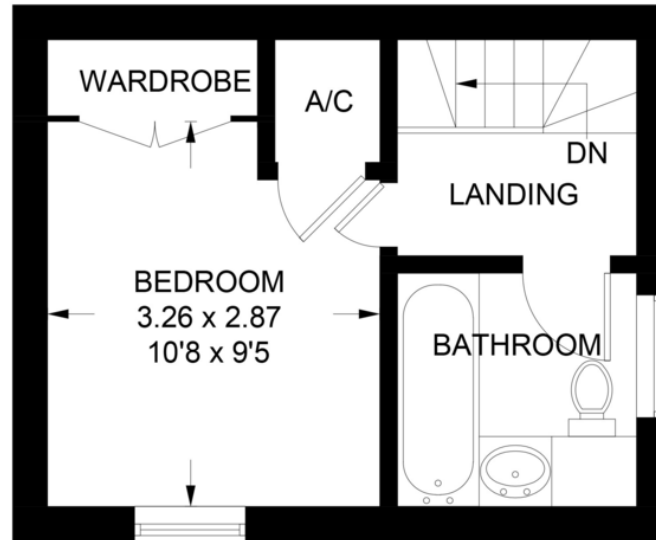
Overall, living in Purbeck Court, Tabor Road provides the perfect opportunity to enjoy a modern and well-connected lifestyle in a sought after residential area of Colchester.

## Purbeck Court

Approximate Gross Internal Area = 40.5 sq m / 435 sq ft



**Ground Floor**  
**20.3 sq m / 218 sq ft**



**First Floor**  
**20.2 sq m / 217 sq ft**

Illustration for identification purposes only,  
measurements are approximate, not to scale.

60 Caelum Drive  
Colchester  
Essex  
CO2 8FP

[www.jackson-ps.co.uk](http://www.jackson-ps.co.uk)  
[sales@jackson-ps.co.uk](mailto:sales@jackson-ps.co.uk)  
01206 863900

Agents Note: Whilst every care has been taken to prepare these particulars, they are for guidance purposes only. All measurements are approximate and are for general guidance purposes only and whilst every care has been taken to ensure their accuracy, they should not be relied upon and potential buyers/tenants are advised to recheck the measurements.