



4 bedroom Semi-Detached House located in Harwich.

Guide Price
£275,000 - £300,000

Find us on..




JOHN ALEXANDER
ESTATE AGENTS



JOHN ALEXANDER
ESTATE AGENTS

Main Road Harwich CO12 4ES



4



1



1



B



EPC

D



FULL DESCRIPTION

THE HOME

Guide Price £275,000 - £300,000

John Alexander is delighted to present this exceptional and beautifully maintained family home, nestled in the sought area of Harwich. A true blend of comfort and style, this property offers the perfect setting for modern family living. With a thoughtfully designed layout, it features a convenient ground-floor cloakroom, ideal for both day-to-day family life and seamless entertaining. Whether you're hosting guests or enjoying quiet family moments, this home is sure to impress with its blend of practicality and charm.

HALLWAY

Stairs to the first floor, radiator, double glazed window to rear aspect, there is an under-stair storage cupboard.

DINING ROOM

3.71M X 3.28M (12'2" X 10'9")

Double glazed window to rear aspect, radiator, doors to lounge.

LOUNGE

3.68M X 3.66M (12'1" X 12'0")

Double glazed window to front aspect, radiator.

KITCHEN

3.56M X 2.18M (11'8" X 7'2")

Door to garden, range of wall and base units, work tops over, sink and drainer, plumbing for washing machine, plumbing for dish washer, space for cooker, cooker hood.

GROUND FLOOR CLOAKROOM

Low level WC, wash hand basin, radiator.

BEDROOM ONE

3.43M X 3.28M (11'3" X 10'9")

Double glazed window to rear aspect, radiator, door to bedroom four/study.

BEDROOM FOUR / STUDY

2.62M X 2.16M (8'7" X 7'1")

Double glazed window to side aspect, radiator.

BEDROOM TWO

3.07M X 2.49M (10'1" X 8'2")

Double glazed window to front aspect, radiator.

BEDROOM THREE

3.66M X 2.31M MAX (12'0" X 7'7" MAX)

Double glazed window to front aspect, radiator.

BATHROOM

Obscured double glazed window to side aspect, low level WC, bath, wash hand basin.

FRONT GARDEN

Block Paved Driveway, Gated Side Access.

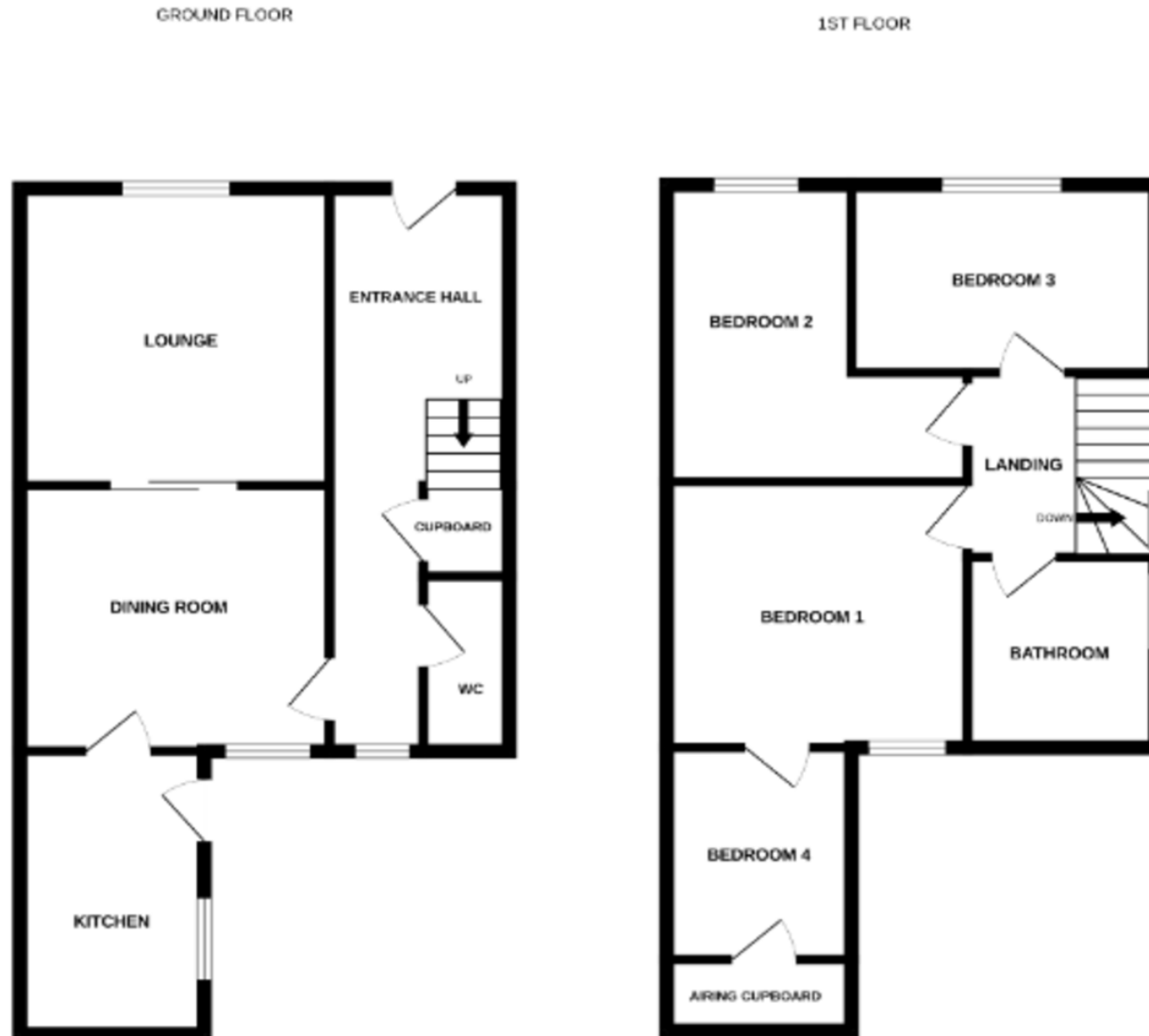
REAR GARDEN

Patio and decking area, gated side access, predominantly laid to lawn with mature shrub borders.





FLOORPLAN



While every attempt has been made to ensure the accuracy of the floorplan contained here, the measurements of doors, windows, rooms and any other items are approximate and no responsibility is taken for any error, omission or mis-statement. This plan is for illustrative purposes only and should be used as such by any prospective purchaser. The services, options and appliances shown have not been tested and no guarantee as to their operability or efficiency can be given.
Made with Meopix 02024

DIRECTIONS

CONTACT

288 High Street
Harwich
Essex
CO12 3PD

E enquiries@john-alexander.co.uk

T 01255 520007

www.john-alexander.co.uk

Find us on..



JOHN ALEXANDER
ESTATE AGENTS