



4 Bedroom Semi-Detached House located in Heybridge.

Find us on..



JOHN ALEXANDER
ESTATE AGENTS

Larch Walk Heybridge Maldon CM9 4TS

FULL DESCRIPTION

OVERVIEW

This beautifully presented four-bedroom semi-detached home is ideally situated in the sought-after area of Heybridge, close to the popular market town of Maldon. Offering generous living space and modern finishes throughout, this property is perfect for families looking for a ready-to-move-into home. The ground floor features a bright and spacious living area, ideal for both relaxing and entertaining. A standout feature of the home is the newly fitted contemporary kitchen, finished to a high standard with modern units, ample storage, and quality work surfaces. Upstairs, the property offers four well-proportioned bedrooms, providing flexible accommodation for growing families, home working, or guest space. The newly fitted bathroom has been stylishly updated, offering a fresh and modern suite. Externally, the property benefits from a private rear garden, perfect for outdoor enjoyment, along with off-street parking. Located near local amenities, schools, and transport links, this home combines comfort, style, and practicality in a desirable location. Early viewing is highly recommended to fully appreciate all that this property has to offer.



4



0



1



C

Asking Price Of
£425,000

Entrance Hall - Main front entrance door, double glazed window, access to downstairs wc, storage cupboard, access to lounge, access to kitchen, stairs to first floor, built in under stairs storage.

Ground Floor Wc - low level wc, hand basin, radiator, double glazed window.

Lounge - 4.19m x 4.14m (13'9 x 13'7) - Double glazed window, radiator, feature fireplace with log burner.

Kitchen/Diner - 7.62m x 3.48m (25' x 11'5) - Open plan kitchen/diner comprising comprehensively fitted wall and base cupboards. Double ceramic Butler sink unit, integrated washing machine, dishwasher and fridge/freezer. Built in full height wall units housing space for microwave oven, display shelves and wine fridge. space for large Range cooker with extractor. Two windows and French doors to rear garden, sky light, underfloor heating.

First Floor -

Bedroom Two - 3.51m x 2.77m (11'6 x 9'1) - Double glazed window, radiator, built in wardrobes.

Bedroom Three - 3.96m x 3.12m (13' x 10'3) - Double glazed window, radiator, built in wardrobe's.



Bedroom Four/Study - 1.98m x 1.96m (6'6 x 6'5) - Double glazed window, radiator.

Bathroom - Re fitted suite with bath tub and shower over, wash basin with vanity storage beneath, low level wc, double glazed window.

2nd Floor -

Bedroom One - 5.51m x 3.94m (18'1 x 12'11) - Double glazed window, double glazed velux window, built in wardrobes, radiator, access to en suite, eave storage.

En Suite - Walk in shower cubide with shower unit, low level wc, wash basin, double glazed window.

Outside -

Garden - Patio area with the rest laid to lawn and access to the garage, border trees and plants, shed to remain.

Garage And Parking - Single garage with up and over door with parking in front.





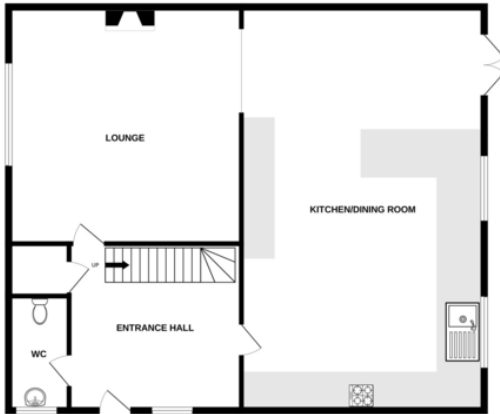


Larch Walk, Heybridge CM9 4TS



FLOORPLAN

GROUND FLOOR



1ST FLOOR



2ND FLOOR



Whilst every attempt has been made to ensure the accuracy of the floorplan contained here, measurements of doors, windows, rooms and any other items are approximate and no responsibility is taken for any error, omission or mis-statement. This plan is for illustrative purposes only and should be used as such by any prospective purchaser. The services, systems and appliances shown have not been tested and no guarantee as to their operability or efficiency can be given.
Made with Metropix ©2026

CONTACT
1 Church Road
Tiptree
Colchester
Essex
CO5 0LG
E info@john-alexander.co.uk

T 01621 814334 www.john-alexander.co.uk

Find us on..



JOHN ALEXANDER
ESTATE AGENTS