



Maldon Road | Tiptree | CO5 0TT

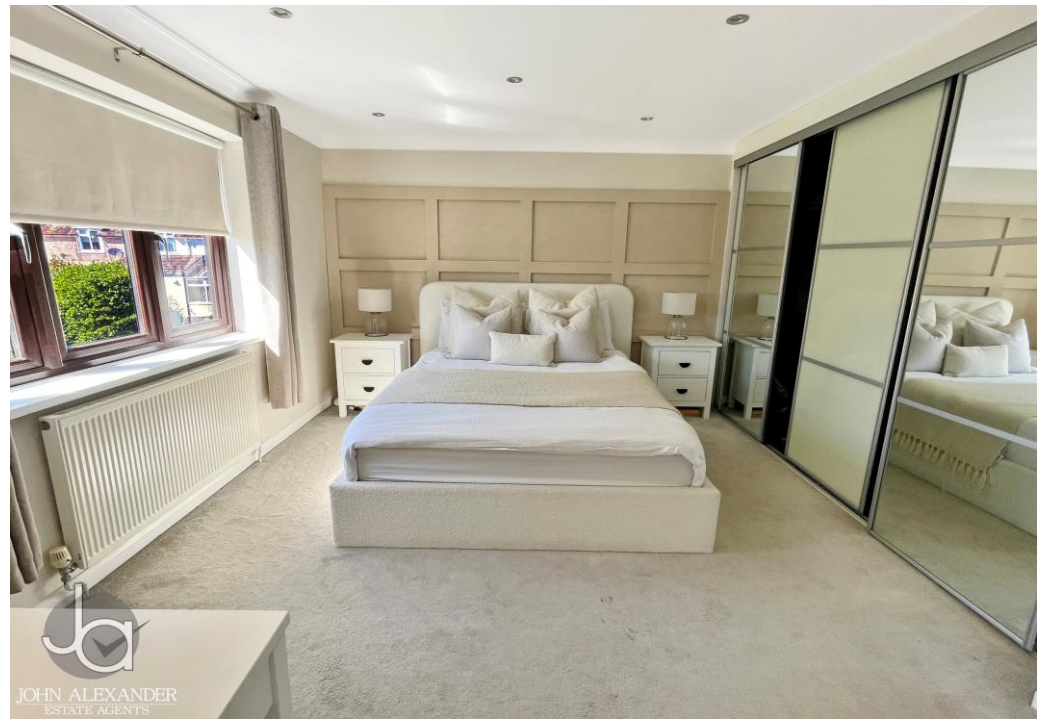


OVERVIEW

A spacious and versatile family home set behind gated access, the property offers generous living accommodation including multiple reception rooms, five bedrooms and modern bathrooms. The heart of the property is the large kitchen/breakfast room, complemented by a log-burning lounge, cinema/sitting room and flexible ground-floor study. Outside, the sizeable garden features an impressive outbuilding with workshop and fully equipped bar, all conveniently located close to village amenities, schools and open green spaces.









STEP INSIDE

To the rear of the property sits the impressive kitchen/breakfast room, measuring approximately 6.71m x 3.63m (22' x 11'11"). Designed as both a practical and social space, the room is center around a large island with marble work surfaces, complemented by modern grey and white cabinetry. Integrated appliances include a built-in microwave, double oven and induction hob, while thoughtful storage features include extensive drawer units and a dedicated recycling cupboard. The room is naturally bright thanks to rear glazing and enjoys direct access to the garden, making it ideal for family living and entertaining.

Flowing from the kitchen is a spacious lounge area measuring 5.08m x 3.46m (16'8" x 11'4"). This inviting reception enjoys generous proportions, wood flooring and a feature log burner which forms a natural focal point. Adjacent to this space is the dining room, measuring 5.08m x 3.57m (16'8" x 11'9"), offering ample room for a large dining table and furniture, with open connectivity to the main living areas for sociable gatherings.

A further reception room sits to the side of the property, currently arranged as a sitting or cinema room. Measuring 4.98m x 3.79m (16'4" x 12'5"), this room enjoys excellent natural light, wood flooring and direct access to the garden, making it a flexible space suited for family use, relaxation or media enjoyment.

Also on the ground floor is a well-proportioned study measuring 3.40m x 3.96m (11'2" x 13'). Finished with wood flooring and feature wall paneling, this room benefits from natural light and mains fed water, allowing it to function equally well as a home office, beauty room or therapy space.

Bedroom two is located on the ground floor and measures 3.52m x 3.96m (11'6" x 13'). This comfortable double room includes built in wardrobes and is served by a private en suite shower room measuring 2.88m x 2.27m (9'5" x 7'5"), ideal for guests or multi-generational living.



STEP INSIDE

The staircase rises to a first-floor landing serving four further bedrooms and the family bathroom. The principal bedroom measures 3.20m x 3.96m (10'6" x 13') and benefits from fitted wardrobes and its own en suite shower room measuring 2.78m x 2.27m (9'1" x 7'5").

Bedroom three is another generous double, measuring 2.94m x 3.96m (9'8" x 13'), while bedroom four measures 2.88m x 3.92m (9'5" x 12'10"), both offering fitted storage and flexible accommodation. Bedroom five, measuring 2.10m x 2.91m (6'11" x 9'7"), is ideal as a child's room, nursery or home workspace.

The first floor is completed by the main family bathroom, measuring 2.40m x 3.11m (7'10" x 10'3"), fitted with a modern suite including a bath, separate shower, partially tiled walls and a heated towel rail.





STEP OUTSIDE

Externally, the property sits on a generous plot with a large rear garden that is mainly laid to lawn with patio seating areas. A real highlight is the detached outbuilding, providing additional lifestyle space. The workshop measures 3.36m x 2.19m (11' x 7'2"), ideal for storage or hobbies, while the adjoining bar measures 3.87m x 4.02m (12'8" x 13'2") and is fully equipped with power, lighting and built in speakers, creating an excellent entertaining venue.

THE SUMMARY

Positioned close to local schools, village amenities, green spaces and popular walking and cycling routes, this well-balanced home offers generous accommodation both inside and out. With its multiple reception rooms, flexible living spaces, outdoor bar and gated driveway, this is a property designed for modern family life and entertaining alike.



