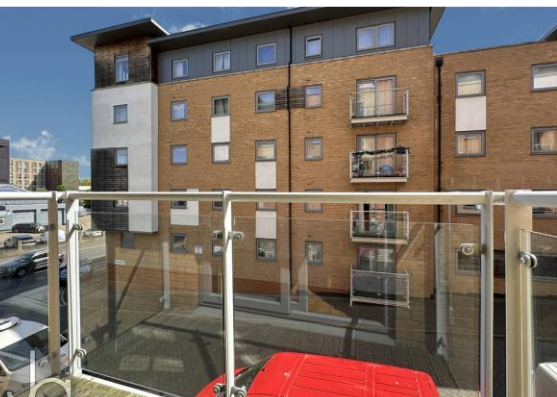




1 bedroom Apartment located in Ship Wharf.

Guide Price
£140,000 - £160,000

Find us on..



JOHN ALEXANDER
ESTATE AGENTS

Sail House Ship Wharf Colchester CO2 8YP

FULL DESCRIPTION

OVERVIEW

GUIDE PRICE £140,000 TO £160,000

This attractive first-floor one-bedroom apartment offers an excellent opportunity for first-time buyers, professional couples, investors, or those seeking convenient university accommodation, all within a highly desirable location. The property benefits from a private balcony, allocated parking and secure entry, ensuring both comfort and peace of mind.

THE HOME

Upon entering, you are welcomed by a hallway leading into a bright and spacious open-plan living and dining area. This appealing space is flooded with natural light through large sliding doors, which provide direct access to the balcony and enhance the sense of openness.

The contemporary open-plan kitchen is fitted with modern wall and base units, integrated appliances, and enjoys ample natural light. The stylish bathroom continues the modern theme, featuring full tiling, a rainfall shower, sleek fittings, and the added luxury of a heated towel rail.

A generously sized master bedroom completes the accommodation, offering a comfortable and practical living space

THE LOCATION

The location is a key highlight, with excellent public transport links, the train station, and the city centre all within easy walking distance. Residents will also benefit from nearby supermarkets, local amenities, walking and cycling routes, and close proximity to the university campus. Altogether, this superb setting supports a vibrant lifestyle for work, study, and leisure alike.



1



1



1



B

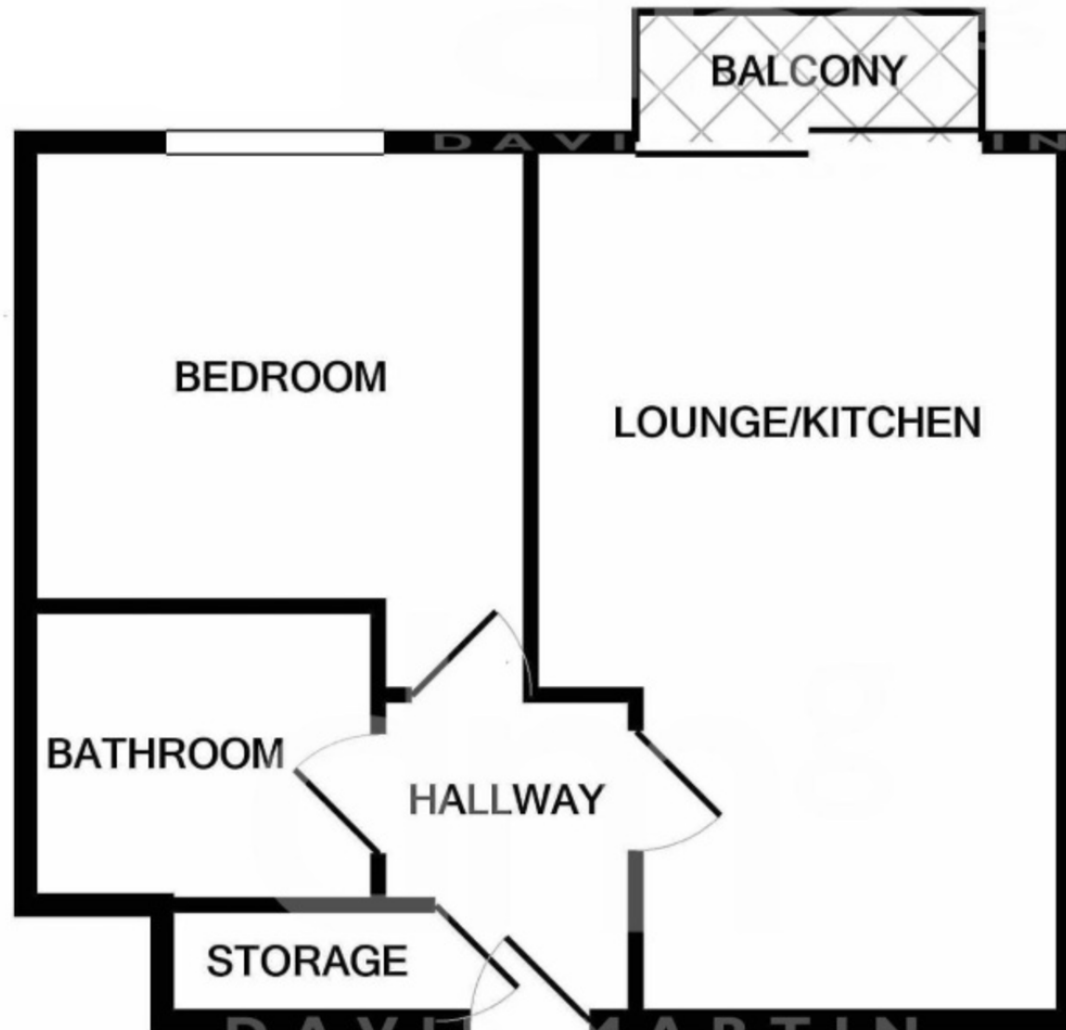


EPC

B



FLOORPLAN



DIRECTIONS

CONTACT

99 London Road
Stanway
Colchester
Essex
CO3 0NY

E sales@john-alexander.co.uk

T 01206 656007

www.john-alexander.co.uk

Find us on..



JOHN ALEXANDER
ESTATE AGENTS